

# INTRODUCING OhioHealth<sup>®</sup>

## a provider-owned health plan from OhioHealth

### Welcome to Better Healthcare

OhioHealth, the largest and most preferred health system in central Ohio, built a better health plan.

*Let us prove it to you.*



### OhioHealth

Local Roots. National Recognition. Exceptional Care.

**12** hospitals  
**60+** outpatient locations



**35,000** associates, physicians, volunteers



### EXCEPTIONAL CARE

virtual health, telehealth, eVisit, office visit and express appointment center.



**CENTRAL OHIO'S LARGEST AND MOST PREFERRED HEALTH SYSTEM.**<sup>1</sup>

1. 2022 OhioHealth Attitude and Usage Study

RECOGNIZED BY

# FORTUNE

as one of the "100 Best Companies to Work For"

**OhioHealth Cancer Care**



OhioHealth can treat **ALL** prevalent cancers.



### Affordability

Local savings, greater value without compromise

**SAVE** up to **20%**

**8.5% LOWER** medical trend than national average

#### LOWER:

- Unit cost
- Cost of outpatient/inpatient services
- Plan and out-of-pocket costs



### Accessibility

Better network access to care

**>6,000** providers

**NATIONWIDE CHILDREN'S**

**22 HOSPITALS**

Clinically Integrated Network (CIN)

**9** behavioral health facilities

Central Ohio Primary Care (COPC)

**>400** Ancillaries

**CLEVELAND CLINIC**



### Simplicity

Expert support, less complexity, better member experience

**95%** member satisfaction

**SAME DAY** primary care

**24/7** Nurse Advice Line

**MEMBER ADVOCATES**

**VIRTUAL HEALTH**, telehealth

**MOBILE APP**

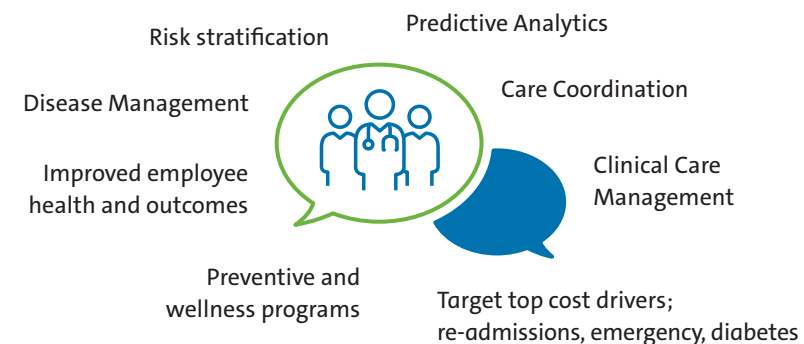
Treatment **COST CALCULATOR**



### Collaboratively

The power of health plan + health provider = less complicated, less stressful, less cost

**INTEGRATED CARE** from physicians, nurses, pharmacists, health coaches, dietitians, and social workers



We use data to help employees avoid illness and manage costs

## OhioHealth and OhioHealthy

**Better Care  
Better Experience  
Better Cost**

- Easier access to physicians
- Seamless integration between physicians, patients and payers
- Accountable to members, not shareholders